



EX8208 ETHERNET SWITCH

Product Overview

The EX8208 modular Ethernet switch, a member of the Juniper Networks EX Series Ethernet Switches product family, offers a flexible, powerful, and modular platform that delivers the performance, scalability, and high availability required for today's high-density data center, campus aggregation, and core switching environments. With a total capacity of up to 6.2 Tbps, the EX8208 system provides a complete, end-to-end solution for the high-performance networks of today and into the future.

Product Description

The eight-slot Juniper Networks® EX8208 Ethernet Switch is ideal for aggregating access switches such as Juniper Networks EX3200 and EX4200 lines of Ethernet switches deployed in campus wiring closets and in data center top-of-rack or end-of-row applications. The EX8208 is also designed to support 1-Gigabit Ethernet server access in data center end-of-row chassis deployments. In core applications, the EX8208 provides approximately 960 Mpps of high-density, wire-speed 10-Gigabit Ethernet performance for the largest campus and data center networks.

Customers can advance the economics of their network by leveraging the consistent performance of the Juniper Networks EX8200 line of Ethernet switches' wire-speed line cards, in conjunction with the EX4200 and EX3200 lines of Ethernet switches and Juniper Networks Junos® operating system to reduce capital and operational expenses across the network infrastructure.

EX8208 Ethernet Switch

The EX8208 switch includes an advanced set of hardware features enabled by Juniper-designed EX-PFE2 ASICs and the carrier-class Juniper Networks operating system, Junos OS, delivering the capabilities needed to support the high-performance networks of today and tomorrow.

The EX8208 switch features eight dedicated line-card slots that can accommodate a variety of Ethernet interfaces. Options include a 48-port 10/100/1000BASE-T RJ-45 unshielded twisted pair (UTP) line card, a 48-port 100BASE-FX/1000BASE-X SFP fiber line card, and an eight-port 10GBASE-X SFP+ fiber line card. Fully configured, a single EX8208 chassis can support up to 384 Gigabit Ethernet or 64 10-Gigabit Ethernet ports at wire speed, delivering one of the industry's highest line-rate 10-Gigabit Ethernet port densities.

At 14 rack-units (RUs) high, three EX8208 Ethernet Switches can fit in a standard 42 RU rack, enabling up to 1,152 Gigabit Ethernet or 192 10-Gigabit Ethernet ports in a single rack. At just 21 inches deep, the EX8208 is sufficiently compact to fit into typical wiring closets, making it ideal for campus deployments where space is at a premium.

The EX8208 features a switch fabric that is capable of delivering 320 Gbps (full duplex) per slot, enabling scalable wire-rate performance on all ports for any packet size. The passive backplane design supports a future capacity of up to 6.2 Tbps, providing a built-in migration path to next-generation deployments.

The base-configuration EX8208 Ethernet Switch includes a side-mounted hot-swappable fan tray with variable-speed fans, one Switch Fabric and Routing Engine (SRE) module, and one dedicated Switch Fabric module. The base EX8208 also ships with two 2000 watt power supplies, although six power supply bays allow users to provision the chassis to provide the power and redundancy required for any application. A redundant EX8208 configuration includes a second SRE module for hot-standby resiliency and a full complement of six power supplies, providing complete redundancy, reliability, and availability. All components are accessible from the front, simplifying repairs and upgrades.

A front-panel chassis-level LCD panel displays Routing Engine status as well as chassis component alarm information for rapid problem identification and resolution to simplify overall operations. The LCD also provides a flexible, user-friendly interface for performing device initialization and configuration rollbacks, reporting system status and alarm notification, or restoring the switch to its default settings.

Table 1: EX8208 Features at a Glance

FEATURES	DESCRIPTION
Chassis	<ul style="list-style-type: none"> • 14 RU; 21 in (53 cm) deep; 17.25 in (43.8 cm) wide • 8 dedicated I/O slots • 6.2 Tbps backplane capacity • Dedicated data, control, and management planes • LCD panel for system monitoring
Power	<ul style="list-style-type: none"> • Energy efficiency: Up to 195,000 packets per second per watt • 6 load-sharing power supplies • 6000 W maximum power configuration • 110 to 240 V universal input N+1 or N+N redundancy
Cooling	<ul style="list-style-type: none"> • Redundant fans and controllers • Side-to-side airflow
Fabric	<ul style="list-style-type: none"> • 320 Gbps (full duplex) per slot fabric capacity • 2+1 redundancy with dual SREs and SF card • Full line-rate forwarding with two fabrics in system
Routing engine	<ul style="list-style-type: none"> • 1+1 redundancy • Master and backup SREs • 2 gigabytes DRAM; 2 gigabytes Flash memory • Console + auxiliary serial and Ethernet management ports • USB storage interface
Operating system	<ul style="list-style-type: none"> • Junos OS
High availability	<p>Hardware designed for continuous operation:</p> <ul style="list-style-type: none"> • Secure, modular architecture isolates faults • Separate control and forwarding planes enhance scalability and resiliency • Transparent failover and network recovery • Graceful Route Engine Switchover (GRES) • Nonstop Routing (NSR)*

* Roadmap

FEATURES	DESCRIPTION
Layer 2 features	<ul style="list-style-type: none"> • Jumbo frames (9216 Bytes) • 4,096 VLANs • VLAN Registration Protocol (GVRP) • 802.3ad – Link Aggregation Control Protocol (LACP) • 802.1D – Spanning Tree Protocol • 802.1w – Rapid Spanning Tree • 802.1s – Multiple Instance Spanning Tree • Redundant Trunk Group (RTG) • VLAN Spanning Tree Protocol (VSTP)
Layer 3 features	<ul style="list-style-type: none"> • Static routing • RIP v1/v2 • OSPF v2 • Filter-based forwarding • Virtual Router Redundancy Protocol (VRRP) • BGP (Advanced Feature license) • IS-IS (Advanced Feature license) • IPv6 (Advanced Feature license – roadmap) • Bidirectional Forwarding Detection (BFD) • Virtual routers
Hardware tunneling	<ul style="list-style-type: none"> • GRE tunnels (Advanced feature license – roadmap) • MPLS capabilities (Advanced feature license – roadmap)
Multicast	<ul style="list-style-type: none"> • Internet Group Management Protocol (IGMP) v1/v2/v3 • IGMP snooping v1/v2/v3 • Protocol Independent Multicast PIM-SM, PIM-SSM, PIM-DM, MSDP
Firewall filters	<ul style="list-style-type: none"> • Ingress & egress L2-L4 access control lists (ACLs): <ul style="list-style-type: none"> – Port ACLs – VLAN ACLs – Router ACLs • Control plane denial of service (DoS) protection
Quality of service (QoS)	<ul style="list-style-type: none"> • 2,000 policers per chassis • 8 egress queues per port • Weighted Random Early Drop (WRED) scheduling • Shaped Deficit Weighted Round Robin (SDWRR) queuing • Strict priority queuing • Multi-field classification (L2 – L4) for scheduling and rewrite
Management	<ul style="list-style-type: none"> • Junos OS command-line interface (CLI) • JUNOScript • Embedded Web-based management – J-Web • Network and Security Manager (NSM) support • LCD panel • SNMP v1/v2/v3 • RADIUS • TACACS+ • Extensive MIB support • Local and remote analyzer (mirroring) • Link Layer Discovery Protocol (LLDP) • Advanced Insight Solutions (AIS)

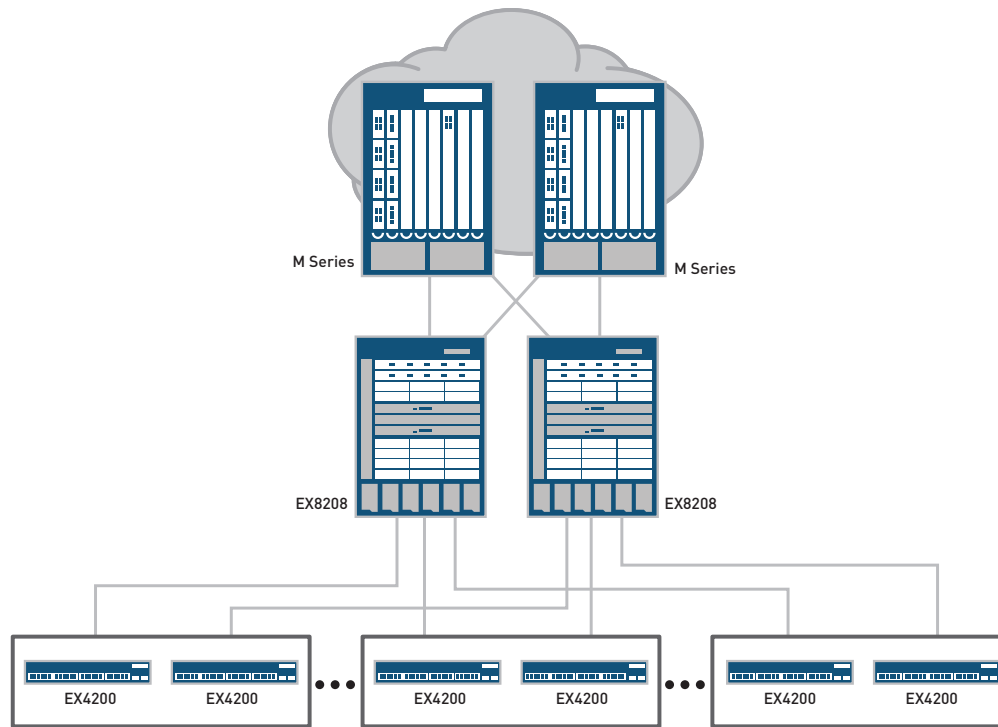


Figure 1: The EX8208 Ethernet Switch offers a high-density, scalable solution for aggregating 10-Gigabit Ethernet uplinks from access-layer devices in the data center.

Deployment Scenarios

The EX8208 switch is optimized for both data center and campus aggregation and core deployments.

In the data center, the EX8208 switch delivers a high-performance, high-density platform that reduces cost and complexity while improving overall scalability and providing carrier-class reliability. Populated with 10-Gigabit Ethernet line cards, the EX8208 can accommodate large numbers of high-speed, line-rate uplinks at any packet size from access layer devices such as EX4200 switches deployed in Virtual Chassis top-of-rack configurations, offering a scalable solution for supporting more servers with fewer switches.

With its high Gigabit Ethernet port densities, the EX8208 can also serve as an end-of-row server access switch. High-density Gigabit Ethernet and 10-Gigabit Ethernet ports on the EX8208 enable the consolidation of aggregation and core layers, simplifying the data center architecture while reducing power, space, and cooling requirements, and lowering total cost of ownership (TCO).

The EX8208 switch has a similar impact on campus aggregation and core environments, where high port densities and carrier-class performance enable the switch to support more users with less equipment than traditional solutions. For example, EX4200 switches deployed in Virtual Chassis configurations provide network access for every floor or building throughout a campus with 10-Gigabit Ethernet uplinks; the high-density EX8208 can aggregate Virtual Chassis uplinks within a single platform to provide high-performance, line-rate connectivity to core switches or WAN edge routers.

Architecture and Key Components

The EX8200 line of Ethernet switches feature a number of distinct architectural elements. The Routing Engine on the SRE module runs Junos OS, which processes all Layer 2 and Layer 3 protocols and manages individual chassis components, while the Switch Fabric module provides the central crossbar matrix through which all data traffic passes. The SRE and Switch Fabric modules work together to fulfill all Routing Engine and Switch Fabric functions.

The EX8200 series line cards include ASIC-based packet forwarding engines—the EX-PFE2—that process network traffic at wire rate, as well as a line-card processor that provides scalable local control and status processing. The EX8208 chassis backplane distributes the data, control, and management plane signals over independent paths to the various system components and distributes power throughout the system. The fan tray provides cooling to the line cards and control modules with redundant variable-speed fans, while the power supplies convert building power to the internal voltage required by the system.

All EX8208 components are hot-swappable, and all central functions are available in redundant configurations, providing high operational availability by allowing continuous system operation during maintenance or repairs.

Switch Fabric and Routing Engine (SRE) Module

The EX8208 SRE module performs two functions: it incorporates switch fabric, control plane, and management plane functionality on a single module, and it includes an integrated Routing Engine featuring a 1.2 GHz processor with 2 gigabytes of DRAM and 2 gigabytes of Flash storage. A dedicated front-panel RJ-45 Gigabit

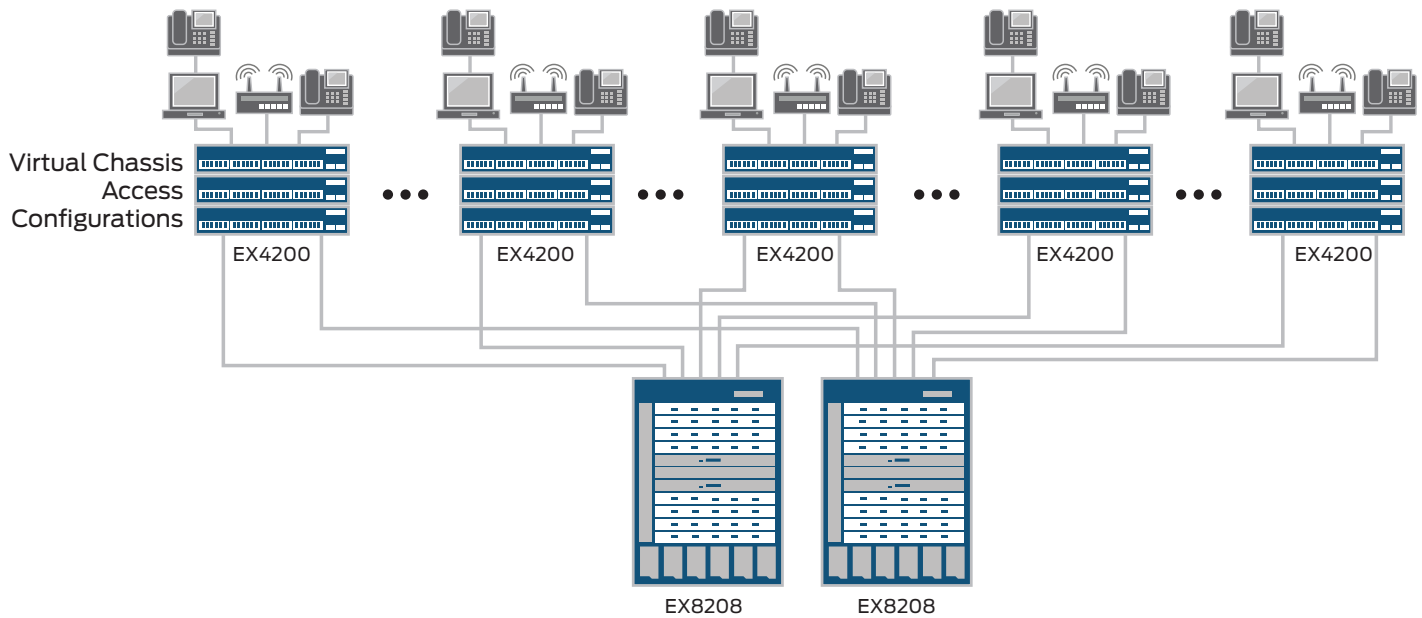


Figure 2: The EX8208 can aggregate Virtual Chassis configurations within a single platform to provide high-performance, line-rate connectivity to upstream devices.

Ethernet port on the SRE module supports out-of-band system management and monitoring, while an external USB port allows easy uploading and storage of software images, configuration files, and logs. Direct console access is available through a dedicated serial port; an auxiliary console interface can support remote modem access to the switch.

The Routing Engine on the SRE module is based on the field-proven hardware architecture used by Juniper Networks routers, bringing the same carrier-class performance and reliability to the EX8208 that Juniper's routers provide to the world's largest service provider networks. The Routing Engine's central CPU performs all system control functions and maintains the hardware forwarding table and routing protocol states for the EX8208 switch. Dedicated hardware on the SRE module supports chassis management functions such as environmental monitoring, while communication between SRE modules and individual EX8200 series line cards takes place over a dedicated internal Gigabit Ethernet out-of-band control interface.

EX8208 Switch Fabric

The switch fabric for the EX8208 switch, which serves as the central non-blocking matrix through which all network data passes, is distributed across three elements: the dual-redundant SRE modules and the dedicated Switch Fabric module. Working together, the SRE and Switch Fabric modules deliver the necessary switching capacity for the EX8208 switch; when the second SRE module is present, the additional switch fabric serves in hot-standby mode, providing full 2+1 switch fabric redundancy. The Switch Fabric modules are hot-swappable and field-replaceable, enabling failed units to be easily replaced without service interruption.

The two active, load-sharing switch fabrics on the SRE and Switch Fabric modules collectively deliver up to 320 Gbps (full-duplex) of packet-data bandwidth per line-card slot, providing sufficient capacity to support future 100-Gigabit Ethernet deployments without requiring any forklift upgrades or changes to the network infrastructure. The EX8208 switch backplane is designed to support a maximum fabric bandwidth of 6.2 Tbps.

Power

The EX8208 chassis contains six power supply bays, providing complete flexibility for both provisioning and redundancy. Each AC power supply delivers 2000 watts of power at high-line (12 A at 200-240 V) or 1200 W at low-line (15 A at 100-120 V) to the chassis. The EX8200 line of Ethernet switches' AC power supplies are more than 90 percent efficient at a wide range of loads, minimizing building power requirements and reducing overall power consumption. These power supplies are interchangeable across the entire EX8200 line of Ethernet switches, simplifying maintenance and sparing.

Although only two power supplies are required for basic configuration and switch power-up, the six power supply bays provide the capacity required to power all possible line-card configurations, and to support N+1 or N+N power redundancy to protect against both component and line input failures. The actual number of power supplies required depends on the combination of line cards installed and the desired level of redundancy (see Table 2). For example, 6000 W is required to support a chassis fully populated with 64 10-Gigabit Ethernet ports, while 3600 W will support various 10-Gigabit Ethernet and Gigabit Ethernet line-card combinations.

Table 2: EX8208 Power Capacity

MAXIMUM SYSTEM POWER CONSUMPTION	NORMAL FAN	HIGH FAN
Base system (one SRE; one Switch Fabric module; one fan tray)	550 W	1350 W
Redundant system (two SREs; one Switch Fabric module; one fan tray)	750 W	1550 W
MAXIMUM LINE CARD POWER CONSUMPTION		
EX8200-8XS 8-port 10GbE SFP+ line card	450 W	
EX8200-48T 48-port 10/100/1000BASE-T RJ-45 line card	350 W	
EX8200-48F 48-port 100FX/1000BASE-X SFP line card	330 W	
MAXIMUM POWER CAPACITY		
220 V 5+1 power supply redundancy	10,000 W	
220 V 3+3 power supply redundancy	6000 W	
110 V 5+1 power supply redundancy	6000 W	
110 V 3+3 power supply redundancy	3600 W	

Features and Benefits

High Availability

The EX8208 switch delivers a number of high availability features to ensure uninterrupted, carrier-class performance.

The EX8208 switch features an extra slot to accommodate a second SRE module, providing N+1 redundancy. When a second SRE module is present, the integrated Routing Engine serves as a backup in hot standby mode, ready to take over in the event of a master RE failure. Should the master fail, an integrated Layer 2 and Layer 3 Graceful Route Engine Switchover (GRES) feature seamlessly transfers control to the backup, maintaining uninterrupted access to applications, services, and IP communications.

Carrier-Class Operating System

The EX8208 chassis-based switch runs the same Junos OS used by the EX3200 and EX4200 switches, as well as the Juniper Networks routers used to power the world's largest and most complex networks.

By utilizing a common operating system, Juniper Networks delivers a consistent implementation and operation of control-plane features across all products. To maintain that consistency, Junos OS adheres to a highly disciplined development process that uses a single source code, follows a single quarterly release train, and employs a highly available modular architecture that prevents isolated failures from bringing an entire system down.

These attributes are fundamental to the core value of the software, enabling all Junos OS-based products to be updated simultaneously with the same software release. All features are fully regression-tested, making each new release a true superset of the previous version; customers can deploy the software with complete confidence that all existing capabilities will be maintained and operate in the same way.

Simplified Management and Operations

A range of system management options are available for the EX8208 switches.

The standard Junos OS CLI provides the same granular management capabilities and scripting parameters found in all Junos OS-based products. The EX8208 switches also include the integrated J-Web management tool, an embedded device manager that allows users to configure, monitor, troubleshoot, and perform device-level maintenance on individual switches via a browser-based graphical interface. In addition, integrated JUNOScript Automation tools provide early detection and automatic resolution of potential problems related to the operating system.

The Juniper Networks Network and Security Manager (NSM) software provides system-level management across all Juniper Networks EX Series Ethernet Switches, as well as other Juniper Networks products deployed throughout the network, all from a single console.

Performance data from EX8208 switches can also be exported to leading third-party management systems such as HP OpenView, IBM Tivoli, and Computer Associates Unicenter, where it is combined with management data from other network components to provide a complete, consolidated view of network operations.

In addition, the EX8200 line of Ethernet switches support the Juniper Networks Advanced Insight Solutions (AIS), a comprehensive set of tools that enable Juniper Networks J-Care Technical Service offerings to automate the delivery of tailored, proactive network intelligence and support services to specific products.



EX8208 Modular Switch Specifications

Physical Specifications

Dimensions (W x H x D):

- 17.25 x 24.25 x 21 in (43.82 x 61.6 x 53 cm)

Weight:

- Base configuration: 148.27 lb (67.25 kg)
- Redundant configuration: 186.56 lb (84.62 kg)
- Chassis with backplane: 89 lb (40.37 kg)
- Fully loaded chassis: 284 lb (128.82 kg)

Hardware Specifications

- Analyzer Sessions: 7 (local or remote)
- Queues per port: 8
- Policers: 2,000 per chassis
- Media Access Control (MAC) Addresses: 160,000
- VLANs: 4,096
- Firewall filters (ACLs—Security and QoS): 54,000
- Link aggregation group (LAG) (ports/groups): 12/255
- GRE: 2,000
- IPv4 Unicast Routes: 512,000 maximum
- IPv4 Multicast Routes: 128,000 maximum
- IPv6 Unicast Routes: 256,000 maximum
- IPv6 Multicast Routes: 128,000 maximum
- Number of Multicast groups: 16,000
- Address Resolution Protocol (ARP) Entries: 100,000
- L3 Next Hops: 220,000
- Jumbo Frames: 9216 bytes
- Buffer per 10-Gigabit Ethernet port: 512 MB
- Buffer per 1-Gigabit Ethernet port: 42 MB

EX8208 System Capacity

- Switching capacity per line card: 320 Gbps (full duplex)
- Maximum system throughput: 960 Mpps

IEEE Compliance

- IEEE 802.1AB: Link Layer Discovery Protocol (LLDP)
- IEEE 802.1D-2004: Spanning Tree Protocol (STP)
- IEEE 802.1p: Class-of-service (CoS) prioritization
- IEEE 802.1Q-2006: VLAN tagging
- IEEE 802.1s: Multiple instances of Spanning Tree Protocol (MSTP)
- IEEE 802.1w: Rapid reconfiguration of Spanning Tree Protocol (RSTP)
- IEEE 802.3: 10BASE-T
- IEEE 802.3u: 100BASE-T
- IEEE 802.3ab: 1000BASE-T
- IEEE 802.3z: 1000BASE-X
- IEEE 802.3ae: 10-Gigabit Ethernet
- IEEE 802.3x: Pause Frames/Flow Control
- IEEE 802.3ad: Link Aggregation Control Protocol (LACP)

RFC Compliance

- RFC 1122: Host Requirements
- RFC 768: UDP
- RFC 791: IP
- RFC 783: Trivial File Transfer Protocol (TFTP)
- RFC 792: Internet Control Message Protocol (ICMP)
- RFC 793: TCP
- RFC 826: ARP
- RFC 894: IP over Ethernet
- RFC 903: RARP
- RFC 906: TFTP Bootstrap

RFC Compliance (continued)

- RFC 1027: Proxy ARP
- RFC 2068: HTTP server
- RFC 1812: Requirements for IP Version 4 Routers
- RFC 1519: Classless Interdomain Routing (CIDR)
- RFC 1256: IPv4 ICMP Router Discovery (IRDP)
- RFC 1058: RIP v1
- RFC 2453: RIP v2
- RFC 1112: IGMP v1
- RFC 2236: IGMP v2
- RFC 3376: IGMP v3
- RFC 1492: TACACS+
- RFC 2138: RADIUS Authentication
- RFC 2139: RADIUS Accounting
- RFC 2267: Network Ingress Filtering
- RFC 2030: Simple Network Time Protocol (SNTP)
- RFC 854: Telnet client and server
- RFC 951, 1542: BootP
- RFC 2131: BOOTP/Dynamic Host Configuration Protocol (DHCP) relay agent and DHCP server
- RFC 1591: Domain Name System (DNS)
- RFC 2338: VRRP
- RFC 2328: OSPF v2 (Edge-mode)
- RFC 1587: OSPF NSSA Option
- RFC 1765: OSPF Database Overflow
- RFC 2154: OSPF w/Digital Signatures (Password, MD-5)
- RFC 2370: OSPF Opaque LSA Option
- RFC 3623: OSPF Graceful Restart
- RFC 2362: PIM-SM (Edge-mode)
- PIM-DM Draft IETF PIM: Dense Mode draft-ietf-idmr-pim-dm-05.txt, draft-ietf-pim-dm-new-v2-04.txt
- RFC 3569: Draft-ietf-ssm-arch-06.txt PIM-SSM PIM Source Specific Multicast
- RFC 1771: Border Gateway Protocol 4
- RFC 1965: Autonomous System Confederations for BGP
- RFC 2796: BGP Route Reflection (supersedes RFC 1966)
- RFC 1997: BGP Communities Attribute
- RFC 1745: BGP4/IDRP for IP-OSPF Interaction
- RFC 2385: TCP MD5 Authentication for BGPv4
- RFC 2439: BGP Route Flap Damping
- RFC 2918: Route Refresh Capability for BGP-4
- RFC 3392: Capabilities Advertisement with BGP-4
- RFC 2796: Route Reflection
- RFC 4360: BGP Extended Communities Attribute
- RFC 4486: Subcodes for BGP Cease Notification message
- RFC 1195: Use of Open Systems Interconnection (OSI) IS-IS for Routing in TCP/IP and Dual Environments (TCP/IP transport only)
- RFC 2474: DiffServ Precedence, including 8 queues/port
- RFC 2598: DiffServ Expedited Forwarding (EF)
- RFC 2597: DiffServ Assured Forwarding (AF)
- RFC 2475: DiffServ Core and Edge Router Functions
- Draft-ietf-idr-restart-10.txt: Graceful Restart Mechanism for BGP
- Draft-ietf-isis-restart-02: Restart Signaling for IS-IS
- Draft-ietf-bfd-base-05.txt: Bidirectional Forwarding Detection

EX8208 Modular Switch Specifications (continued)

Services and Manageability

- Junos OS CLI
- J-Web (embedded Web-based management)
- Out-of-band management: Serial; 10/100/1000BASE-T Ethernet
- ASCII configuration file
- Rescue configuration
- Configuration rollback
- Image rollback
- LCD management
- Element management tools: Network and Security Manager (NSM)
- Proactive services support via Advanced Insight Solutions (AIS)
- SNMP: v1, v2c, v3
- RMON (RFC 2819) Groups 1, 2, 3, 9
- Network Time Protocol (NTP)
- DHCP server
- DHCP relay with Option 82
- RADIUS
- TACACS+
- SSHv2
- Secure copy
- HTTP/HTTPS
- DNS resolver
- Syslog logging
- Environment monitoring
- Temperature sensor
- Config-backup via FTP/secure copy

Network Management—MIB support

- RFC 1155: Structure of Management Information (SMI)
- RFC 1157: SNMPv1
- RFC 1905, RFC 1907: SNMP v2c, SMIv2 and Revised MIB-II
- RFC 2570–2575: SNMPv3, user based security, encryption and authentication
- RFC 2576: Coexistence between SNMP Version 1, Version 2 and Version 3
- RFC 1212, RFC 1213, RFC 1215: MIB-II, Ethernet-like MIB and traps
- RFC 2578: SNMP Structure of Management Information MIB
- RFC 2579: SNMP Textual Conventions for SMIv2
- RFC 2925: Ping/Traceroute MIB
- RFC 2665: Ethernet-like interface MIB
- RFC 1643: Ethernet MIB
- RFC 1493: Bridge MIB
- RFC 2096: IPv4 Forwarding Table MIB
- RFC 2011: SNMPv2 for internet protocol using SMIv2
- RFC 2012: SNMPv2 for transmission control protocol using SMIv2
- RFC 2013: SNMPv2 for user datagram protocol using SMIv2
- RFC 2863: Interface MIB
- RFC 3413: SNMP Application MIB
- RFC 3414: User-based Security model for SNMPv3
- RFC 3415: View-based Access Control Model for SNMP
- RFC 3621: PoE-MIB (PoE switches only)
- RFC 1724: RIPv2 MIB
- RFC 2863: Interface Group MIB
- RFC 2932: IPv4 Multicast MIB
- RFC 2787: VRRP MIB
- RFC 1850: OSPFv2 MIB
- RFC 1657: BGP-4 MIB

Network Management—MIB support (continued)

- RFC 2819: RMON MIB
- RFC 2287: System Application Packages MIB
- RFC 4188: STP and Extensions MIB
- RFC 4363: Definitions of Managed Objects for Bridges with Traffic Classes, Multicast Filtering and VLAN extensions
- RFC 2922: LLDP MIB
- Draft-ietf-idr-bgp4-mibv2-02.txt: Enhanced BGP-4 MIB
- Draft-ietf-isis-wg-mib-07
- Draft-blumenthal-aes-usm-08
- Draft-reeder-snmpv3-usm-3desede-00
- Draft-ietf-idmr-igmp-mib-13
- Draft-ietf-idmr-pim-mib-09
- Draft-ietf-bfd-mib-02.txt

Troubleshooting

- Debugging: CLI via console, Telnet or SSH
- Diagnostics: Show, debug, and statistics commands
- Analyzer session: Ingress and/or egress traffic on multiple source ports monitored to one destination port or VLAN
- Local port and remote VLAN analyzers (up to seven sessions)
- IP tools: Extended ping and trace
- Juniper Networks' commit and rollback

Environmental Ranges

- Operating temperature: 32° to 104° F (0° to 40° C)
- Storage temperature: -40° to 158° F (-40° to 70° C)
- Operating altitude: up to 10,000 ft (3,048 m)
- Non-operating altitude: up to 16,000 ft (4,877 m)
- Relative humidity operating: 5% to 90% (non-condensing)
- Relative humidity non-operating: 0% to 95% (non-condensing)
- Acoustic noise: 62 dBA (based on operational tests taken from bystander position [front] and performed at 23° C in compliance with ISO 7779)

Safety and Compliance

- CSA 60950-1 (2003) Safety of Information Technology Equipment
- UL 60950-1 (2003) Safety of Information Technology Equipment
- EN 60950-1 (2001) Safety of Information Technology Equipment
- IEC 60950-1 (2001) Safety of Information Technology Equipment (with country deviations)
- EN 60825-1 +A1+A2 (1994) Safety of Laser Products—Part 1: Equipment Classification
- EN 60825-2 (2000) Safety of Laser Products—Part 2: Safety of Optical Fiber Comm. Systems
- C-UL to CAN/CSA 22.2 No.60950-1(First Edition)
- TUV/GS to EN 60950-1, Amendment A1-A4, A11
- CB-IEC60950-1, all country deviations
- CE

EMC

- EN 300 386 V1.3.3 (2005) Telecom Network Equipment—EMC requirements
- FCC Part 15 Class A (2007) USA Radiated Emissions
- EN 55022 Class A (2006) European Radiated Emissions
- VCCI Class A (2007) Japanese Radiated Emissions
- ICES-003 Class A
- AS/NZS CISPR 22 Class A
- CISPR 22 Class A

Immunity

- EN 55024 +A1+A2 (1998) Information Technology Equipment Immunity Characteristics
- EN-61000-3-2 (2006) Power Line Harmonics
- EN-61000-3-3 +A1 +A2 +A3 (1995) Power Line Voltage Fluctuations
- EN-61000-4-2 +A1 +A2 (1995) Electrostatic Discharge
- EN-61000-4-3 +A1+A2 (2002) Radiated Immunity
- EN-61000-4-4 (2004) Electrical Fast Transients
- EN-61000-4-5 (2006) Surge
- EN-61000-4-6 (2007) Immunity to Conducted Disturbances
- EN-61000-4-11 (2004) Voltage Dips and Sags

Customer-Specific Requirements

- GR-63-Core (2006) Network Equipment, Building Systems (NEBS) Physical Protection
- GR-1089-Core (2006) EMC and Electrical Safety for Network Telecommunications Equipment
- SR-3580 (1995) NEBS Criteria Levels (Level 3) (pending)

Environmental

- Reduction of Hazardous Substances (ROHS) 5/6

Telco

- Common Language Equipment Identifier (CLEI) code

Juniper Networks Services and Support

Juniper Networks is the leader in performance-enabling services and support, which are designed to accelerate, extend, and optimize your high-performance network. Our services allow you to bring revenue-generating capabilities online faster so you can realize bigger productivity gains and faster rollouts of new business models and ventures. At the same time, Juniper Networks ensures operational excellence by optimizing your network to maintain required levels of performance, reliability, and availability. For more details, please visit www.juniper.net/us/en/products-services/.

Ordering Information

MODEL NUMBER	DESCRIPTION
Hardware	
EX8208-BASE-AC	Base EX8208 system configuration: 8-slot chassis with passive backplane and 1x fan tray, 1x routing engine with switch fabric, 1x switch fabric module, 2x 2000 W AC PSUs with power cords, and all necessary blank panels
EX8208-REDUND-AC	Redundant EX8208 system bundle: 8-slot chassis with passive backplane and 1x fan tray, 2x routing engine with switch fabric, 1x switch fabric module, 6x 2000 W AC PSUs with power cords, and all necessary blank panels
EX8208-SRE320	Switch and Routing Engine for EX8208, redundant
EX8208-SF320-S	Switch Fabric module for EX8208, spare
EX8208-CHAS-S	EX8208 chassis with backplane, spare
EX8208-FAN-S	EX8208 fan tray, spare
EX8200-PWR-AC2K	AC power supply, 2000 W at 220 V (1200 W at 110 V), redundant (AC power cords sold separately)

EX8200 Line Cards

EX8200-48T	48-port 10/100/1000BASE-T RJ-45 line card
EX8200-48F	48-port 100FX/1000BASE-X SFP line card; requires SFP optics sold separately
EX8200-8XS	8-port 10 GbE SFP+ line card; requires SFP+ optics sold separately

Software

EX8208-AFL	EX8208 Advanced Feature License
------------	---------------------------------

About Juniper Networks

Juniper Networks, Inc. is the leader in high-performance networking. Juniper offers a high-performance network infrastructure that creates a responsive and trusted environment for accelerating the deployment of services and applications over a single network. This fuels high-performance businesses. Additional information can be found at www.juniper.net.

Corporate and Sales Headquarters

Juniper Networks, Inc.
1194 North Mathilda Avenue
Sunnyvale, CA 94089 USA
Phone: 888.JUNIPER (888.586.4737)
or 408.745.2000
Fax: 408.745.2100
www.juniper.net

APAC Headquarters

Juniper Networks (Hong Kong)
26/F, Cityplaza One
1111 King's Road
Taikoo Shing, Hong Kong
Phone: 852.2332.3636
Fax: 852.2574.7803

EMEA Headquarters

Juniper Networks Ireland
Airside Business Park
Swords, County Dublin, Ireland
Phone: 35.31.8903.600
EMEA Sales: 00800.4586.4737
Fax: 35.31.8903.601

To purchase Juniper Networks solutions, please contact your Juniper Networks representative at 1-866-298-6428 or authorized reseller.

Copyright 2009 Juniper Networks, Inc. All rights reserved. Juniper Networks, the Juniper Networks logo, Junos, NetScreen, and ScreenOS are registered trademarks of Juniper Networks, Inc. in the United States and other countries. All other trademarks, service marks, registered marks, or registered service marks are the property of their respective owners. Juniper Networks assumes no responsibility for any inaccuracies in this document. Juniper Networks reserves the right to change, modify, transfer, or otherwise revise this publication without notice.